

For Sale

Land

Land At Wellesbourne Road

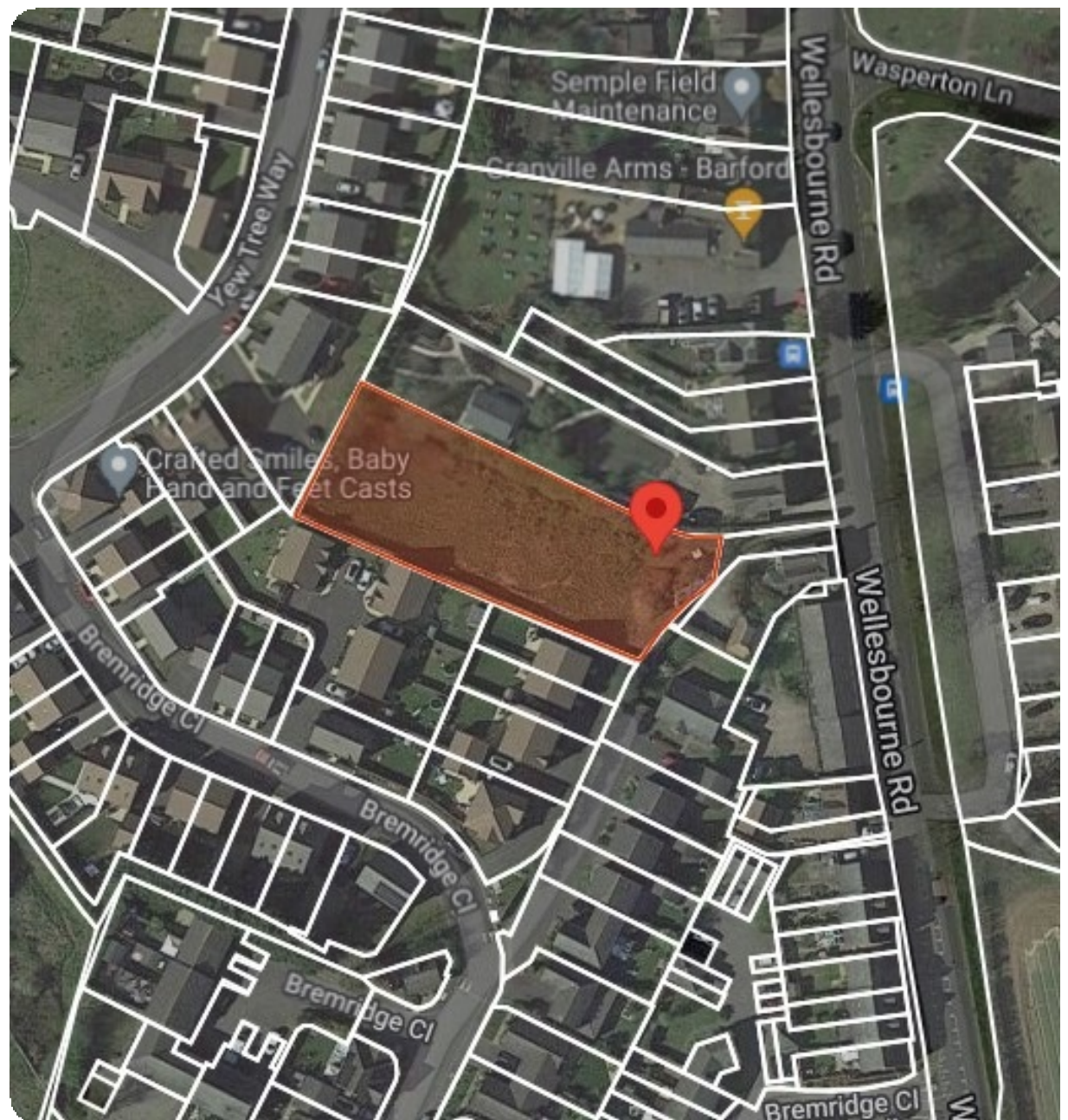
Barford, Warwick, CV35 8DS

BROMWICH
HARDY
024 7630 8900
www.bromwichhardy.com

0.46 Acres
On Application

Key Features

- 0.46 Acre Site
- Restricted access
- In between a residential development
- Regular shaped, level site
- Just off Wellesbourne Road



Land At Wellesbourne Road, Barford, Warwick,
CV35 8DS



Location

Barford, nestled in the picturesque county of Warwickshire, exudes quintessential English charm with its winding streets, historic buildings, and lush greenery. Located in the heart of England, the village of Barford sits just a few miles south of Warwick and a short drive from the bustling city of Coventry. Nature enthusiasts will find plenty to explore in the nearby countryside, with meandering footpaths leading to hidden gems such as Barford Wood, a tranquil haven teeming with wildlife and ancient woodland flora.

Description

Greenbelt land for sale in Barford with development potential. The rectangular-shaped block is in the heart of a newly built residential scheme. The property is landlocked.

Accommodation

Area	Acres	Hectares
Site	0.46	0.19
Total	0.46	0.19

Tenure

Sale of the freehold title: WK348753
The sale will include a 30% uplift on any enhanced value obtained as a result of any planning permission granted for a period of 25 years.

Land At Wellesbourne Road, Barford, Warwick,
CV35 8DS

With over 250 years
of combined
experience, trust
Bromwich Hardy to
safeguard your
commercial property.



Legal Costs

Each party is to bear their own legal and surveyors costs incurred in this transaction.

Viewing

Strictly by appointment with the agent Bromwich Hardy.



Caine Gilchrist

Contact us with any queries about the property or to book a viewing

02476 308 900

07806 767 073

caine.gilchrist@bromwichhardy.com



Land At Wellesbourne Road, Barford, Warwick,
CV35 8DS



02476 308900



office@bromwichhardy.com

www.bromwichhardy.com