

For Lease

Retail Property (High Street)



120 Far Gosford Street

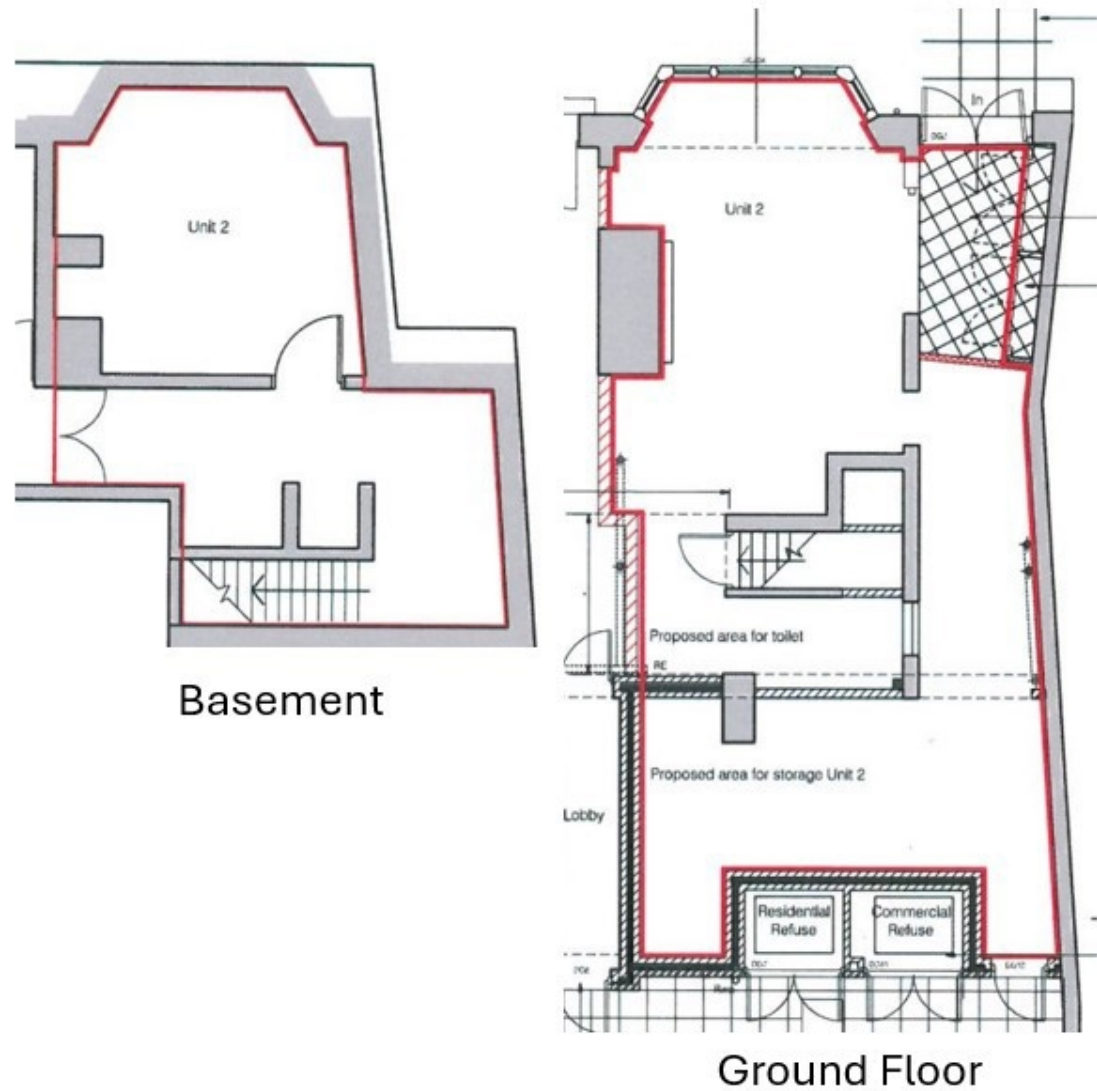
Coventry CV1 5EA

BROMWICH
ARDY
024 7630 8900
www.bromwichhardy.com

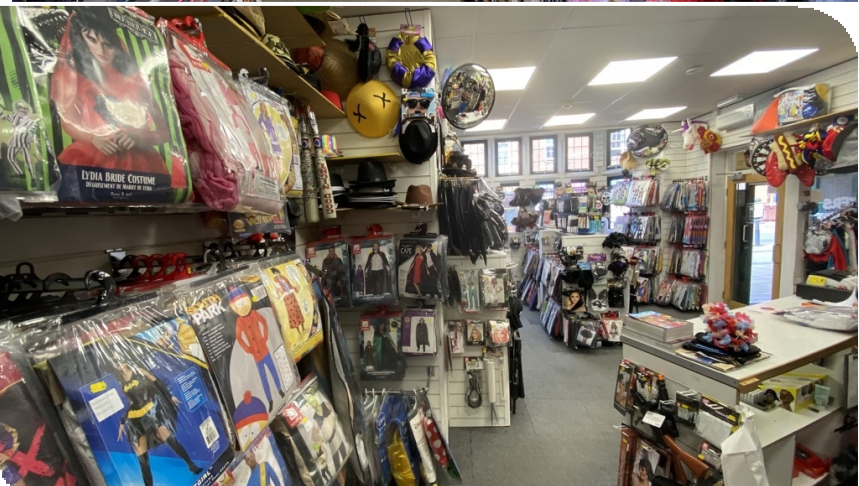
1,119 Sq Ft
£13,980 Per Annum

Key Features

- Prominent location
- Historical features
- Conservation Area
- Busy student area
- Close to Coventry University



120 Far Gosford Street, Coventry, CV1 5EA



Location

Far Gosford Street is one of Coventry's busiest streets and is home to countless shops, restaurants and cafes. This area of Coventry is also home to a large student population, with the property itself being less than a 5 minute walk from Coventry University Library and surrounding buildings. Notable local occupiers include Domino's Pizza and Sainsbury's Local, as well as FarGo Village - Coventry's vibrant creative district.

Description

120 Far Gosford Street comprises a character retail shop on one of Coventry's busiest streets. There is a retail area and storage space on the ground floor, with the basement providing additional storage space. The property is 1,119 sq ft in total or 430 sq ft ITZA.

Accommodation

Area	Sq Ft	Sq M
Zone A	280	26.01
Zone B	119	11.06
Zone C		0
Remainder	720	66.89
Total	1,119	103.96

Business Rates

This property has a rateable value of £7,200. Occupiers may therefore qualify for small business rates relief.

Tenure

For property is available by way of a new lease for a minimum term of 3 years.

EPC

On request.

120 Far Gosford Street, Coventry, CV1 5EA

With over 250 years
of combined
experience, trust
Bromwich Hardy to
safeguard your
commercial property.



Service Charge

Further information available upon request.

Legal Costs

Each party is to bear their own legal and surveyors costs incurred in this transaction.

Viewing

Strictly by appointment with the agent Bromwich Hardy.



Mark Booth

Contact us with any queries about the property or to book a viewing

02476 308 900

07497 150 632

mark.booth@bromwichhardy.com



120 Far Gosford Street, Coventry, CV1 5EA

02476 308900 office@bromwichhardy.com www.bromwichhardy.com